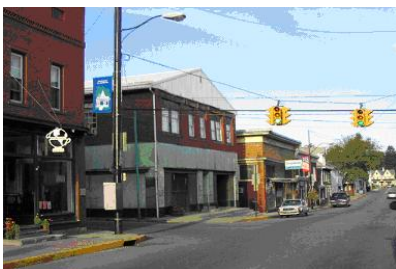


CONNECTING RURAL COMMUNITIES

Connecting Rural Communities is a Web based guide providing resources and tools that enable Extension staff to help community leaders identify and design projects that improve the ability of organizations and individuals to participate in the knowledge society.

This hands-on conference will provide an in-depth understanding about how technology is impacting rural communities and how Cooperative Extension staff in all program areas can use the processes and materials in the guide to help community leaders (agricultural, youth, government, healthcare, education, business) identify and implement projects that improve their community's digital development.



Registration—This hands-on program will provide Cooperative Extension educators and faculty with the background and tools they can use to help community leaders identify, develop and implement sustainable projects that will improve their community's ability to participate in the global economy. Travel scholarships are available. Space is limited and early registration is recommended.

Registration fee

\$35.00—Early Bird (until April 15, 2006)

\$50.00—Full Registration (after April 15, 2006)

Detailed registration and travel scholarship information is available on the NERCRD Web site. <http://www.cas.nercrd.psu.edu/ConnectingCommunities/ConnectingCommunities.htm>

Conference Facilities—Sheraton Society Hill, Philadelphia—The hotel is located amidst lush landscaping and cobblestone streets in the most historic square mile in America and just four blocks away from Philadelphia's renowned Independence Hall. <http://sheraton-philadelphia.felcor.com/>

Hotel rooms—A block of rooms is being held for the nights of June 5-8 at a rate of \$179.00/night. Reservations must be made by May 12. Please mention Penn State University Connecting Communities. (215) 238-6000

Planning Committee: Bill Shuffstall, Penn State; Rod Howe, Cornell; Mary Peabody, University of Vermont; Rick Moorefield, West Virginia University; Paul Treadwell, Cornell; Chyi-lyi (Kathleen) Liang, University of Vermont

THE NORTHEAST REGIONAL CENTER FOR RURAL DEVELOPMENT

7 Armsby Building
University Park, PA 16802
814/863-4656—Phone
814/863-0586—Fax
www.cas.nercrd.psu.edu

THE NORTHEAST REGIONAL CENTER FOR RURAL DEVELOPMENT

CONNECTING RURAL COMMUNITIES:

Cooperative Extension
as a Catalyst

JUNE 6-7, 2006
SHERATON SOCIETY HILL
PHILADELPHIA, PA



CONTACT: PAM HILEMAN
PKH4@PSU.EDU
814-863-4656

CONNECTING RURAL COMMUNITIES

Technology is impacting every segment of our society. Individuals unable to use technology tools will be competing for the low paying jobs. Communities unable to assure the availability of these tools will be economically marginalized with businesses and residents leaving for better prospects.

Leaders and organizations in many communities across the country have mobilized to undertake projects to improve the availability of broadband access and increase the diffusion and adoption of digital tools by organizations and individuals in their community.

The processes and tools in the Connecting Communities Guide provide



resources that enable Extension educators to help community leaders identify and implement

projects that will improve their communities' digital development.

AGENDA

TUESDAY JUNE 6

10 amRegistration

11 amWelcome and Introduction

11:30 am ..Luncheon and Keynote
"Economic and Societal Impact of IT on
Communities Today and in the Future"

Dr. Andrew Cohill, President/CEO Design Nine

1 pmCooperative Extension's
Response—Successes, Challenges and
Lessons Learned in Digital Development
Programming (Panel)

2 pmIntroduction to Digital
Development Framework

3 pmCommunity Based Digital
Development Initiatives—The Roles Cooperative
Extension can play.

4 pmConnecting Communities Guide—
Introduction to Tools, Facilitators and Project
Leaders Guides

5 pmDinner on your own—Your Chance
to Explore Historic Philadelphia



WEDNESDAY JUNE 7

8 am Connecting Communities
Introduction Continued

9 am Connecting Your Community—
"Community Teams" will use the
Connecting Communities resources to
work through assessments, vision, project
identification and planning tools and
report on their "projects."

Noon—Lunch

1 pm Working together to connect
our communities—Strategies for collabora-
tion across the region.

3 pm Adjourn

THE NORTHEAST REGIONAL
CENTER FOR RURAL
DEVELOPMENT

Major project funding was provided by the Southern Rural Development Center as part of its CSREES National Extension e-Commerce Demonstration Project.